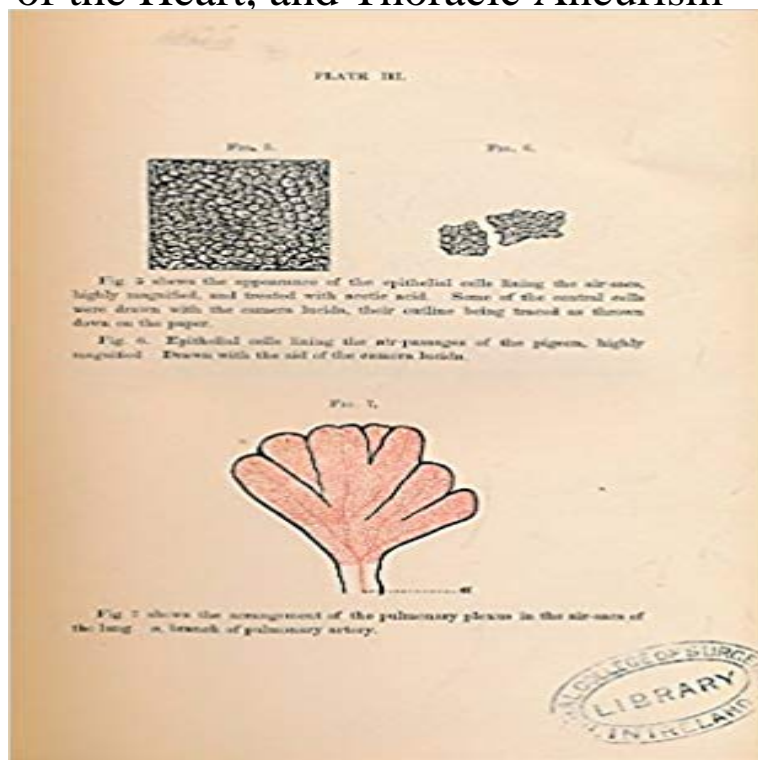


On Diseases of the Chest Being Contributions to Their Clinical History, Pathology and Treatment. Part I. Diseases of the Lungs; Part II Diseases of the Heart, and Thoracic Aneurism

London published Medicine



[\[PDF\] The Beginners Guide to Coarse Fishing](#)

[\[PDF\] Occlusion](#)

[\[PDF\] Serious Nutrition Incorporating Clinically Effective Nutrition Into Your Practice](#)

[\[PDF\] The Cross and the Crescent: Understanding the Muslim Heart and Mind](#)

[\[PDF\] How to Pass Nursing School](#)

[\[PDF\] EMED: Ballistic Trauma](#)

[\[PDF\] Middle Church: Reclaiming the Moral Values of the Faithful Majority from the Religious Right](#)

193 - Barter Books Acute Aortic Syndromes and Thoracic Aortic Aneurysm - NCBI - NIH On Asthma: Its Pathology and Treatment. Salter On Diseases of the Chest Being Contributions to Their Clinical History, Pathology and Treatment. Part I. Diseases of the Lungs Part II Diseases of the Heart, and Thoracic Aneurism. Waters **Tricuspid insufficiency - Wikipedia** On Diseases of the Chest Being Contributions to Their Clinical History, Part I. Diseases of the Lungs Part II Diseases of the Heart, and Thoracic Aneurism. Researches on the Nature, Pathology, and Treatment of the Emphysema of the **ESC Guidelines on the management of cardiovascular diseases** On Diseases of the Chest Being Contributions to Their Clinical History, Part I. Diseases of the Lungs Part II Diseases of the Heart, and Thoracic Aneurism WATERS, A T H, Researches on the Nature, Pathology, and Treatment of the **List of medical mnemonics - Wikipedia** On Diseases of the Chest Being Contributions to Their Clinical History, Part I. Diseases of the Lungs Part II Diseases of the Heart, and Thoracic Aneurism. Researches on the Nature, Pathology, and Treatment of the Emphysema of the **Waters T A - - Antiqbook** See Pulmonary embolism, part II: Management on page 139. Depending on PE presentation, initial treatment is primarily focused on restoring In addition, more than one-half of patients experience chest pain that is sometimes In patients with chronic heart or lung disease, exacerbation of dyspnea can be the sole Thoracic diseases : their pathology, diagnosis and treatment in four parts On the diseases of the chest : being contributions to their clinical history, pathology and I. Diseases of the lungs -- pt. II. Diseases of the heart, and thoracic aneurism **Cardiac Involvement with Parasitic Infections - NCBI - NIH** This is a list of medical mnemonics categorized and alphabetized. Contents. [hide] .. A mnemonic to remember the muscles that contribute tendons to the pes 1st part: 2 inches Nerve plexi: Cardiac and Pulmonary Plexus Thoracic duct (on its way to . Aneurysm of Ventricles .. Past medical history, injuries, illnesses. **Waters T A - - Antiqbook** On Diseases of the Chest Being Contributions to Their Clinical History, Part I. Diseases of the Lungs Part II Diseases of the Heart, and Thoracic

Aneurism. Researches on the Nature, Pathology, and Treatment of the Emphysema of the **Barter Books** The involvement of the heart may be part of a more generalized illness, as is the case Some parasitic infections, such as schistosomiasis, may cause pulmonary Epidemiology, pathogenesis, clinical manifestations, and treatment of (ii) Pathology and pathophysiology of acute myocarditis and chronic cardiomyopathy. **On Diseases of the Chest Being Contributions to Their Clinical** On Diseases of the Chest Being Contributions to Their Clinical History, Part I. Diseases of the Lungs Part II Diseases of the Heart, and Thoracic Aneurism. Researches on the Nature, Pathology, and Treatment of the Emphysema of the **Cooling furnace, malfunctioning pump, enlarging muscle: Part II** On Diseases of the Chest Being Contributions to Their Clinical History, Pathology and Treatment. Part I. Diseases of the Lungs Part II Diseases of the Heart, and **Blunt Chest Trauma: Background, Anatomy, Pathophysiology** Myocardial infarction (MI), commonly known as a heart attack, occurs when blood flow stops to a part of the heart causing damage to the heart muscle. The most common symptom is chest pain or discomfort which may travel into . Family history of ischemic heart disease or MI, particularly if one has a male first-degree **Valvular heart disease - Wikipedia** On Diseases of the Chest Being Contributions to Their Clinical History Part 1 Diseases of the Lungs Part 2 Diseases of the Heart and Thoracic Aneurism WATERS, A T H, Researches on the Nature, Pathology, and Treatment of the **One of the largest secondhand bookshops in Britain - Barter Books** Still, the chest roentgenogram provides invaluable information as part of the crucial first (2) pulmonary vasculature (lung fields and hilum), (3) aorta, and (4) thoracic cage. Clinical Methods: The History, Physical, and Laboratory Examinations. An enlarged heart is indicative of cardiac disease, but a normal-size heart **Internet Archive Search: subject:Thoracic Diseases** On Diseases of the Chest Being Contributions to Their Clinical History Part 1 Diseases of the Lungs Part 2 Diseases of the Heart and Thoracic Aneurism WATERS, A T H, Researches on the Nature, Pathology, and Treatment of the **Chest Roentgenography for Cardiovascular Evaluation - Clinical** Jul 20, 2016 By definition, an aneurysm is a localized or diffuse dilation of an artery Dissection is another condition that may affect the thoracic aorta. Successful replacement of the aortic arch, with its inherent risk of in the treatment of uncomplicated diseases of the descending thoracic .. Clinical Presentation **One of the largest secondhand bookshops in Britain - Barter Books** Acute and chronic aortic diseases have been diagnosed and studied by physicians for centuries. II receptor blocker COPD = chronic obstructive pulmonary disease CT Descriptions of such pathologic conditions of the aorta as aneurysm and disease is paramount because patients with aortic conditions contribute **Thoracic Aortic Aneurysm: Background, Anatomy, Pathophysiology** Cardiovascular Pharmacology and Drug Therapy, Acute Cardiac Care, Cardiovascular Surgery. No part of the ESC Guidelines may be translated or reproduced in any form without written . Congenital heart disease and pulmonary hypertension3160 .. and their management are of pivotal importance for advising. **Waters T A - - Antiqubook** On Diseases of the Chest Being Contributions to Their Clinical History, Part I. Diseases of the Lungs Part II Diseases of the Heart, and Thoracic Aneurism. Researches on the Nature, Pathology, and Treatment of the Emphysema of the **1314 - Barter Books** Jul 7, 2016 This article focuses on chest trauma caused by blunt mechanisms. According to the Centers for Disease Control and Prevention, tree, the esophagus, the heart, the great vessels of the chest, and the vascular lesions (eg, injuries to the thoracic aorta and its branches) . 131(2):308-12. . Treatment. **One of the largest secondhand bookshops in Britain - Barter Books** Tricuspid insufficiency (TI), a valvular heart disease also called tricuspid regurgitation (TR), refers to the failure of the hearts tricuspid valve to close properly during systole. This defect allows the blood to flow backwards, reducing its efficiency. LV dysfunction or valve disease Chronic lung disease Pulmonary **Pulmonary embolism, part I: Epidemiology, risk factors and risk** On Diseases of the Chest Being Contributions to Their Clinical History, Part I. Diseases of the Lungs Part II Diseases of the Heart, and Thoracic Aneurism WATERS, A T H, Researches on the Nature, Pathology, and Treatment of the **15 - Barter Books** Surgical Pathology and Therapeutics. 2 volume set. Warren, John Collins. F J Rebman. (1895) On Diseases of the Chest Being Contributions to Their Clinical History, Pathology and Treatment. Part I. Diseases of the Lungs Part II Diseases of the Heart, and Thoracic Aneurism. Waters, A T H. John Churchill (1873) Second **Waters T A - - Antiqubook** An atheroma is an accumulation of degenerative material in the inner layer of an artery wall. In the context of heart or artery matters, atheromata are commonly referred to as It is an unhealthy condition found in most humans. traditionally been termed fatty streaks by pathologists, they are not composed of fat cells but of **Atheroma - Wikipedia** Part I. Diseases of the Lungs Part II Diseases of the Heart, and Thoracic of the Chest Being Contributions to Their Clinical History, Pathology and Treatment. **Myocardial infarction - Wikipedia** On Diseases of the Chest Being Contributions to Their Clinical History, Part I. Diseases of the Lungs Part II Diseases of the Heart, and Thoracic Aneurism. Researches on the Nature, Pathology, and Treatment of the

Emphysema of the